

Women's Division 2005

by MARY BETH COUDAL

The 2005 Women's Division budget of close to \$18.5 million will support United Methodist Women's participation in God's mission with women, youth and children throughout the world. The 2005 budget is \$18,225,527 -- the amount United Methodist Women members gave in undesignated giving in 2003. The 2005 budget includes:

Divisionwide Program, \$2,229,799. This category provides funding for enrichment and operation of the organization of United Methodist Women: Assembly; resource development; quarterly mailings to local units; resources and contacts for conference presidents, vice presidents, secretaries, communications coordinators and secretaries of program resources; expenses for Women's Division meetings and for division directors' attendance at workshops, Leadership Training Event and regional schools of Christian mission; cultivation for conference programs; unanticipated program opportunities; and ecumenical relationships.

Section of Christian Social Responsibility, \$464,814. This category includes work with justice coalitions; resources, mailings and contacts for conference mission coordinators for spiritual growth and social action; and providing members with resources and contacts for education and advocacy about action issues such as the Children's Campaign, economic justice, environmental justice, mission education, public policy, racial justice, U.N. advocacy and U.N. community programs, spiritual and theological development, the Reading Program, and ecumenical relations.

Mary Beth Coudal is executive secretary for mission opportunities for the Women's Division of the United Methodist General Board of Global Ministries.

Section of Membership and Organizational Development, \$684,000. This category includes resource and program development; contact and resources for conference mission coordinators for membership nurture and outreach; education for mission enrichment, including training leaders for mission education of children and youth; Leadership Training Event; schools of Christian mission; evaluation reports; and resources for district visitation to local units.

Section of Finance, \$185,000. This category includes resources and contacts for conference treasurers and mission coordinators for education and interpretation, Special Mission Recognition expenses, financial interpretation, auditing, and property management.

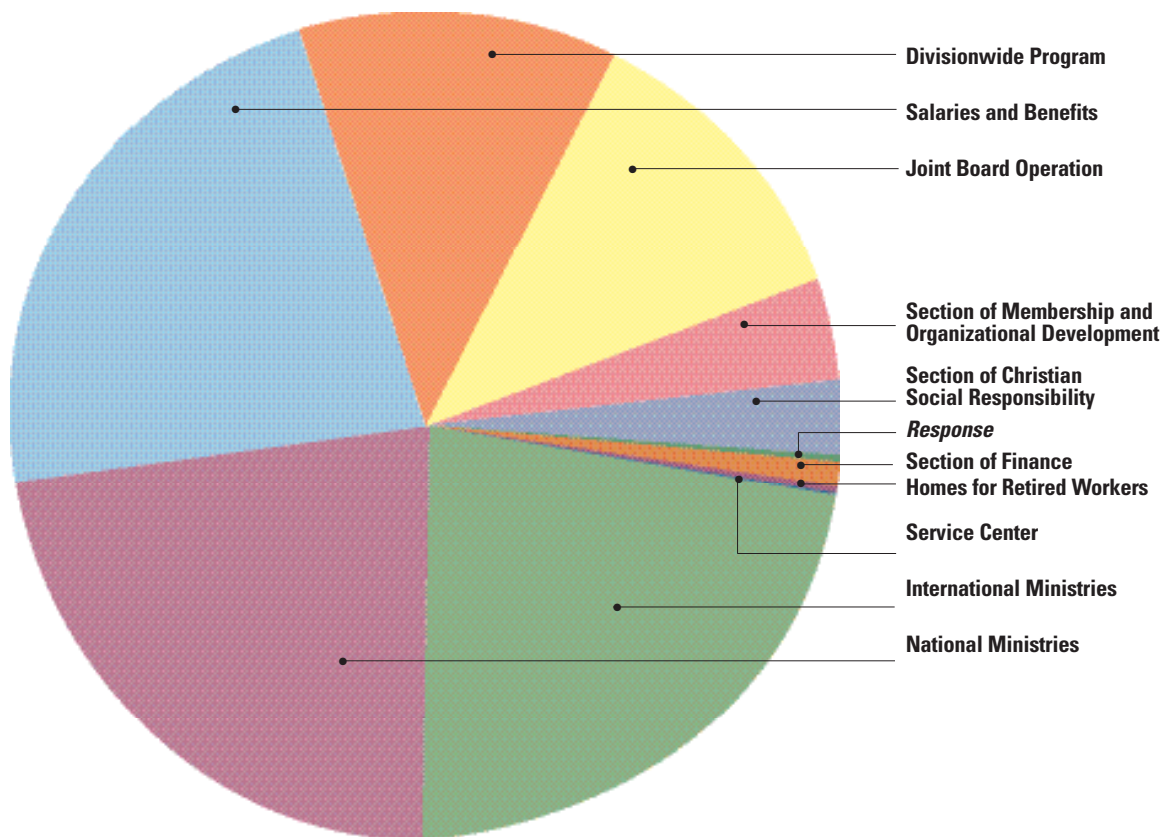
Response, \$50,000. This category contributes to production and editorial costs of *Response*, the every-member magazine.

Service Center, \$20,000. This funding contributes to operational costs of the Service Center in Cincinnati, Ohio, the literature-distribution center of the United Methodist General Board of Global Ministries, which is owned and managed by the Women's Division.

Homes for Retired Workers, \$50,000. This category provides subsidy for care at Brooks-Howell Home in Asheville, N.C.

Salaries and Benefits, \$4,006,344. This category includes salaries and benefits as determined by the United Methodist General Board of Global Ministries and federal and state laws for 28 executive, five professional and 27 general staff in New York City; Washington, D.C.; Atlanta, Ga.; Nashville, Tenn.; and Dallas, Texas. Most of these staff are directly responsible for program and resources for United Methodist Women.

Budget Appropriations



Joint Board Operation, \$2,431,796. This category covers the Women's Division's share of the operation of the United Methodist General Board of Global Ministries. Services include accounting; information systems; communication services; property, insurance and legal services; and board-meeting expenses.

National Ministries, \$4,051,887. This category is for ministries with women, children and youth in the United States. It includes funding for:

- National mission institutions, 70 percent;
- Programs with women and children, 8 percent;
- Support for deaconesses, church and community workers, and US-2s, 7 percent;
- Other community ministry programs, 5 percent; and
- Administrative funds for the Community and

Institutional Ministries Unit of the United Methodist General Board of Global Ministries, 10 percent.

International Ministries, \$4,051,887. This category is for ministries with women, children and youth outside the United States. It includes funding for:

- Programs and ministries, 40 percent;
- Mission personnel, 35 percent;
- Persons in mission in their own countries, 5 percent;
- Administrative funds for the Mission Contexts and Relationships Unit of the United Methodist General Board of Global Ministries, 5 percent;
- Administrative funds for the Mission Personnel Unit of the board, 5 percent; and
- Ecumenical ministries, 10 percent.

